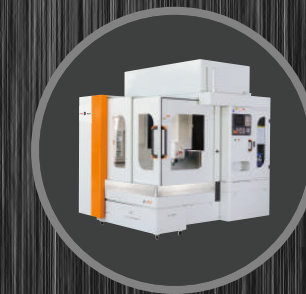
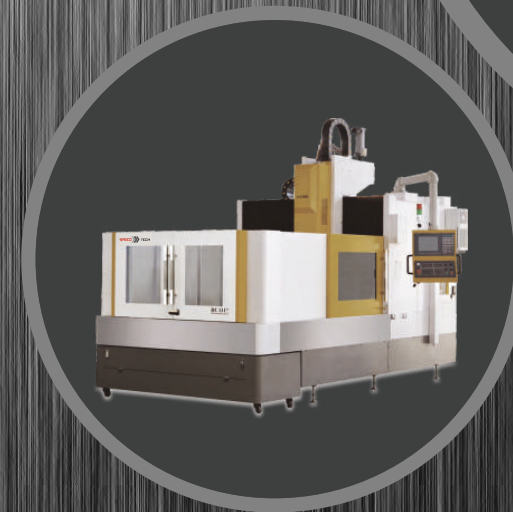
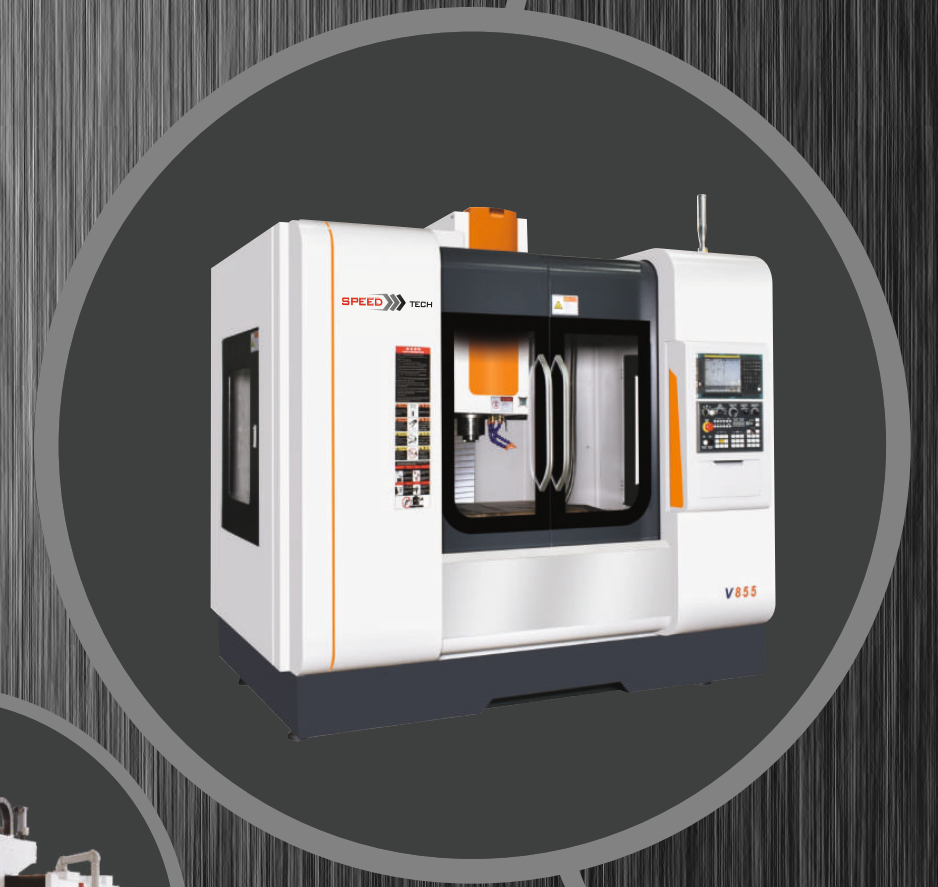


SPEED  **TECH**



Balkanlar Cnc



V Series

V series Vertical Machining Center

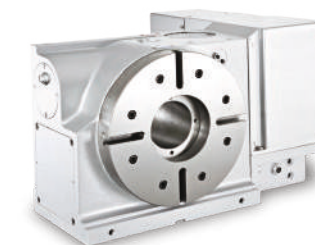
+ MECHANICAL CHARACTERISTICS

DEKAY vertical machining center is mainly used to process high accuracy, many processes and complex shape of plate, shell and mold. It can be continuously completed in one clamp for parts with milling, drilling, expanding, reaming, boring, tapping etc., also it can be machining two-dimensional surface and inclined surface, programmed processing, reduce the processing cycle time. So that users can get high economic performance.



| Item | Unit | V855 | V1160 | V1370LH | V1580LH |
|---------------------------------------|-------|-----------------|-----------------|-----------------|-----------------|
| Machining scope | | | | | |
| X axis travel | mm | 800 | 1100 | 1300 | 1500 |
| Y axis travel | mm | 550 | 600 | 700 | 800 |
| Z axis travel | mm | 550 | 600 | 700 | 700 |
| Spindle center to guide way of column | mm | 595 | 650 | 750 | 865 |
| Spindle nose to table surface | mm | 120-670 | 120-720 | 120-820 | 120-820 |
| Table | | | | | |
| Table size | mm | 1000x550 | 1200x600 | 1400x700 | 1600x800 |
| T slot | mm | 5x18x90 | 5x18x100 | 7x22x110 | 7x22x100 |
| Table load | Kg | 500 | 800 | 1000 | 1100 |
| Spindle | | | | | |
| Spindle speed | rpm | 8000 | 8000 | 6000 | 6000 |
| Spindle taper | - | BT40 | BT40 | BT50 | BT50 |
| Spindle motor power | kW | 7.5 | 11 | 15 | 15 |
| Spindle torque | N.m | 35/47.7 | 47/70 | 140/190 | 140/190 |
| Feedrate | | | | | |
| X/Y/Z Cutting feedrate X/Y/Z | m/min | 10 | 10 | 10/10/10 | 10/10/10 |
| X/Y/Z Rapid traverse X/Y/Z | m/min | 48/48/48 | 36/36/30 | 30/30/20 | 30/30/20 |
| Others | | | | | |
| ATC capacity | T | 24 | 24 | 24 | 24 |
| Control system | - | MITSUBISHI M80B | MITSUBISHI M80B | MITSUBISHI M80B | MITSUBISHI M80B |
| Machine weight | t | 5 | 6.5 | 10 | 15.5 |
| Machine size | mm | 2600x2500x2700 | 3200x2700x3000 | 4180x3050x3187 | 4580x3050x3187 |

| | Standard | Option |
|--|---------------------------------------|--|
| | 1. Control system:Mitsubishi M80B | 1. Control system:FANUC 0i MF |
| | 2. Spindle cooling system | 2.Direct driven 12000/15000rpm, Built in spindle 20000rpm(BT40) |
| | 3. Pneumatic.lubrication system | 3. Coolant through spindle |
| | 4. Guideway steel cover | 4. CNC rotary table(The 4th axis) |
| | 5. 3-color signal lamp, working light | 5. Workpiece probe |
| | 6. Standard accessories | 6. Tool setter |
| | 7. Common service tools | 7. Oil skimmer |
| | 8. Chip conveyor with Back flushing | 8. External chip conveyor |



F Series

High Speed Engraving And Milling Machine

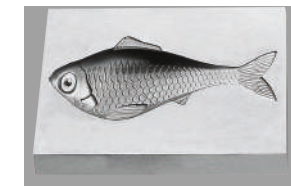
+ MECHANICAL CHARACTERISTICS

The built in spindle (option: ISO30 or HSK40) with the maximum speed up to 24000 rpm provide high precision machining and fine surface machining, mold processing can be finished in one time only without polishing, it will be reduce the time cost of mold processing.



| 项 目 Item | 单 位 Unit | F650 | F870 | F1614 | F2015 |
|-------------------------------|----------|----------------|----------------|----------------|----------------|
| Machining scope | | | | | |
| X axis travel | mm | 600 | 800 | 1600 | 2000 |
| Y axis travel | mm | 500 | 700 | 1400 | 1500 |
| Z axis travel | mm | 240 | 300 | 700 | 700 |
| Spindle nose to table surface | mm | 50-400 | 40-340 | 250-950 | 120-820 |
| Table | | | | | |
| Table size | mm | 700x500 | 850x700 | 1700x1300 | 2000x1400 |
| T solt | - | 5x14x100 | 5x14x125 | 7x22x185 | 11x18x120 |
| Table load | Kg | 400 | 600 | 4000 | 5000 |
| Spindle | | | | | |
| Spindle speed | rpm | 24000 | 24000 | 12000 | 6000 |
| Spindle taper | - | ER32 | ER32 | BT40 | BT50 |
| Spindle motor power | kW | 5.5 | 5.5 | 11 | 15 |
| Feedrate | | | | | |
| X/Y/Z Cutting feedrate X/Y/Z | m/min | 8 | 8 | 10 | 6 |
| X/Y/Z Rapid traverse X/Y/Z | m/min | 12 | 12 | 20 | 10 |
| Others | | | | | |
| Control system | - | SYNTEC | SYNTEC | SYNTEC | SYNTEC |
| Machine weight | t | 3 | 4 | 13.5 | 15 |
| Machine size | mm | 1890X1940X2300 | 2200X2300X2480 | 4900X3152X3330 | 5100X2700X3500 |

| Standard | Option |
|--|--|
| <ol style="list-style-type: none"> Control system: SYNTEC 21MA 24000rpm built in spindle (F650、 F870) Spindle cooling system Pneumatic.lubrication system Full enclosure with top cover 3-color signal lamp, working light Standard accessories Common service tools | <ol style="list-style-type: none"> Control system: MITSUBISHI M80A CNC rotary table(The 4th axis) Tool setter Auxiliary worktable 24000/30000 rpm built in spindle |





Balkanlar Cnc

PARAMETER

| Parameter | Dc1113 Value |
|---------------------------------|------------------|
| Positioning accuracy | 0.01/500mm |
| Repeat positioning accuracy | 0.01mm |
| X/Y/Z axis travel | 1100×1300×500mm |
| Worktable size | 1100×1300mm |
| Max. load | 2000kg |
| Machine weight | 7.5t |
| Power supply and total capacity | 380V/20kVA |
| Spindle motor power | BT40 (7.5-11kW) |
| Spindle Max. speed | 12000r/min |
| Max. feeding speed G00 | 12m/min |
| CNC controller | SYNTEC |
| Tool holder | BT40 |
| AC servo motor | |
| Dimension | 3400×2450×2800mm |
| Gantry width | 1140mm |
| Spindle nose to worktable | 160mm-560mm |

DC1113

Machining size of DC 1113 engraving and milling machine fills in the blanks of the specifications between DC1090 and DC 1215.0-3000mm operating stroke of Kaibo CNC products has classical models for the customer' s free choice.It is large in operating stroke,cutting amount and loading capacity.It is applicable for machining harge and medium molds.Optional mechanical main-axle and automatic tool-exchange further increase the cutting and machining speed of machine tool.





Balkanlar Cnc

PARAMETER

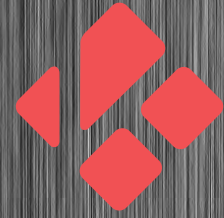
| Parameter | Dc1317 Value |
|---------------------------------|------------------|
| Positioning accuracy | 0.01/500mm |
| Repeat positioning accuracy | 0.01mm |
| X/Y/Z axis travel | 1300×1700×500mm |
| Worktable size | 1300×1700mm |
| Max. load | 2000kg |
| Machine weight | 12t |
| Power supply and total capacity | 380V/30kVA |
| Spindle motor power | BT40 11-15kW |
| Spindle Max. speed | 12000rpm |
| Max. feeding speed G00 | 12m/min |
| CNC controller | SYNTEC |
| Tool holder | BT40 |
| AC servo motor | |
| Dimension | 4520×2600×3200mm |
| Gantry width | 1360mm |
| Spindle nose to worktable | 160mm-660mm |

DC1317

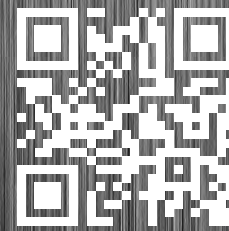


DC1317 engraving and milling machine has been specially designed by Kaibo Company for large molds. It fills in the gaps that the engraving and milling machine can not machine large size molds in the current markets. It is balanced in transmission, higher in rigidity. It shows the advanced craft and technological level of Feihe products.





**Balkanlar
Cnc**



www.balkanlarcnc.com

0(212)613 8783 - +90 543 500 2543 - +90 532 445 7477

info@balkanlarcnc.com



[balkanlarcnc](https://www.facebook.com/balkanlarcnc)



[balkanlarcnc](https://www.instagram.com/balkanlarcnc)

**Yenidoğan Mah. Abdi İpekçi Cad. Yeniçeri Sok. No:26
Bayrampaşa/İSTANBUL**